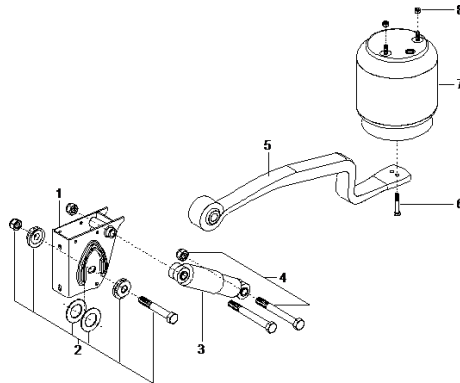


Changes of the assembling for gigant air bellows

example figure:



1. Flange plate of all air bellows

The tightening torque of the fastening nut (Pos.8) for the air bellows with locknut DIN 985 (polyamide clamping part) is reduced to 55 ± 5 Nm.

The tightening torque is reduced!

DIN 985 (polyamide clamping part)

example figure:



gigant material-no.: 710500119

OLD - tightening torque - OLD

$77,5 \pm 2,5$ Nm

NEW - tightening torque - NEW

55 ± 5 Nm

2. Only for center screws of GL70L, GL70 and GL70HD air bellows

The center screw (Pos.6) for assembling the gigant air bellow is changed from a hexagon head screw DIN 931 to a micro-encapsulated hexagon head screw DIN 931.

The tightening torque is unchanged.

OLD - DIN 931 - OLD

example figure:



gigant material-no. M12x100: 701312100

NEW - DIN 931 + micro - encapsulated - NEW

example figure:



gigant material-no. M12x100: 703011881

tightening torque

55 ± 5 Nm